

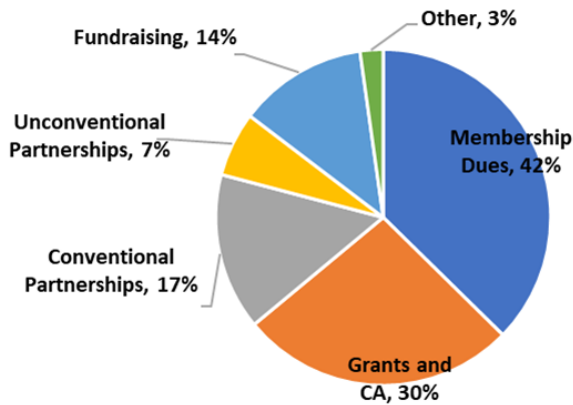


National Association of Conservation Districts

Balancing State Association Budgets

Survey Results (13 respondents)

Average Budget Breakdown



Grants and Cooperative Agreements

Focused on completing specified work. Examples:

- NRCS
- State Agriculture Agencies
- State Water Quality /Environmental Agencies
- Keith Campbell Foundation

Conventional Partnerships

Any baseline funding that is not tied to specific work. There appeared to be some confusion between this and grants.

State Agencies

Unconventional Partnerships

- The Nature Conservancy
- McKnight Foundation
- National Wildlife Federation
- NHF (National Hunting and Fishing Day)
- Corporate Funding
- Local Foundations

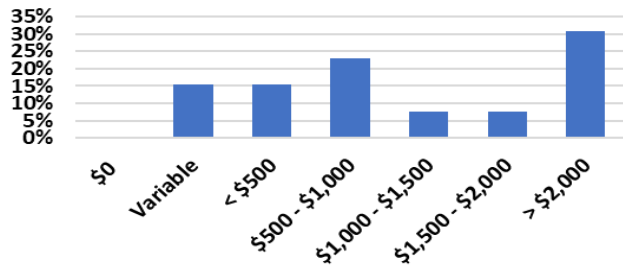
Fundraising

*Some of these were entered in **Other**. Examples:*

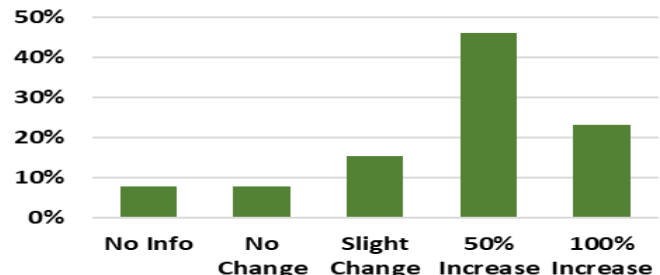
- Annual Conference
- Events, trainings and meetings
- Youth Education
- Donations
- Auctions

Membership Dues

Annual Membership Dues Paid



Membership Dues Change



All State Associations Collect Dues

Based on 13 respondents:

- Average annual dues ~\$1,500
- Most eligible members (90%) pay full dues
- Most dues are ~50% higher than 10 years ago
- Dues over \$2,000 have seen the largest increases
- 85% of respondents link voting rights to paying dues
- Some states have a sliding scale for dues based on district budget or assessed value
- Some States have payment plans available

Other Noted Benefits for Paying Dues

- Serving as officers in the state association
- Grant funding through association
- Leadership class
- Discounted event prices